

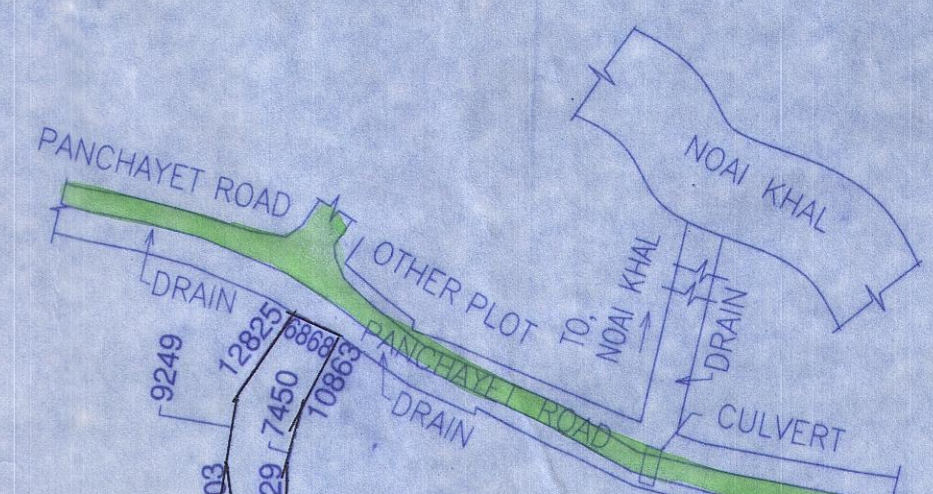
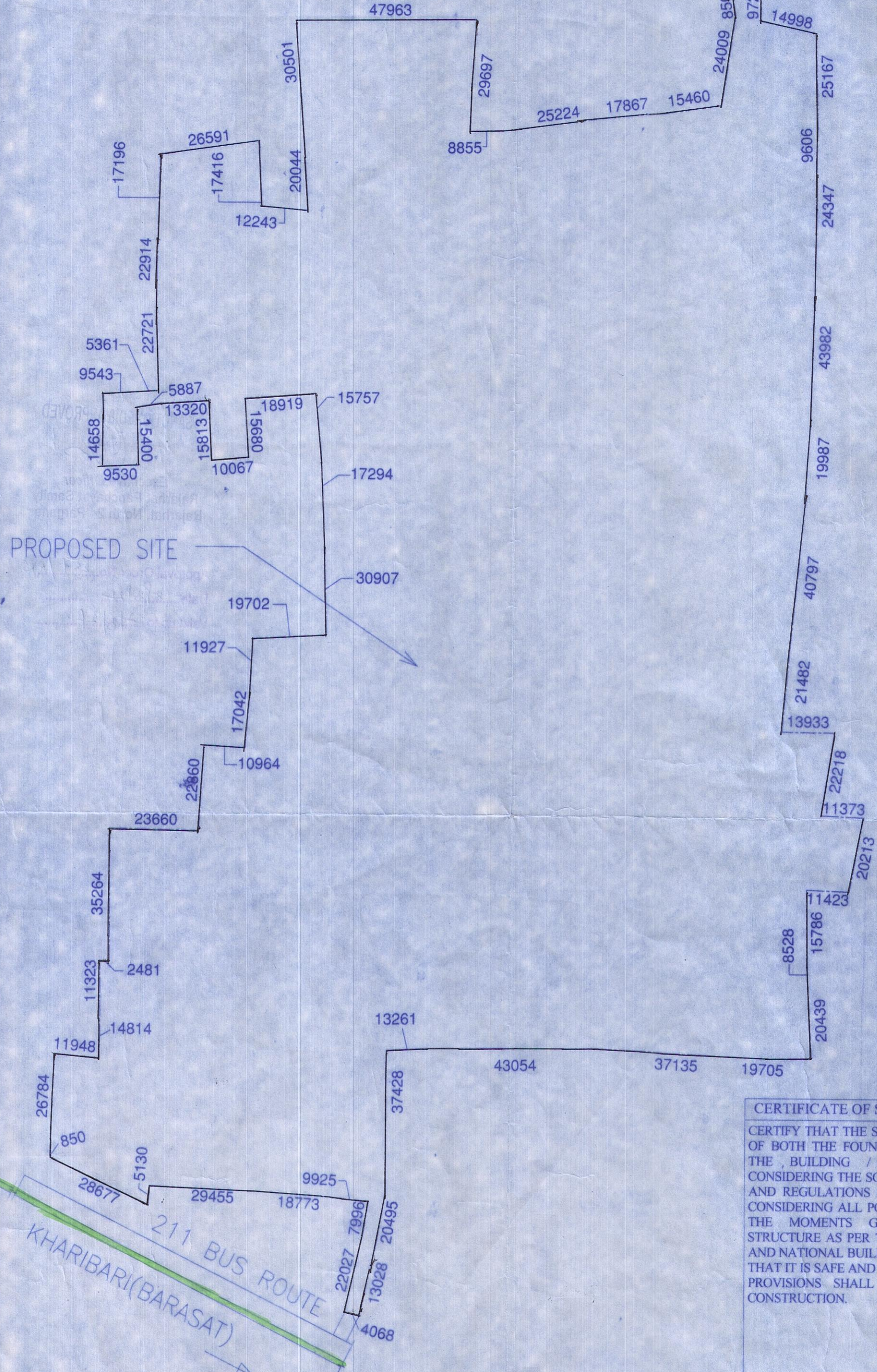
NAME OF OWNER NAME OF THE COMPANY	NAME OF OWNER NAME OF THE COMPANY	NAME OF OWNER NAME OF THE COMPANY
1. M/s. Alishan Supply Private Limited	51. M/s. Guidance Vyapaar Private Limited	101. M/s. Sanjivani Vanijya Private Limited
2. M/s. Adya Real Estates Private Limited	52. M/s. Gullmarg Vyapaar Private Limited	102. M/s. Sargam Vyapaar Private Limited
3. M/s. Anchor Vanijya Private Limited	53. M/s. Hanurang Tie Up Private Limited	103. M/s. Sawarg Vanijya Private Limited
4. M/s. Anratma Advisory Private Limited	54. M/s. Indivar Tracom Private Limited	104. M/s. Shivasthal Dealers Private Limited
5. M/s. Anratma Dealers Private Limited	55. M/s. Jaijnendra Distributors Private Limited	105. M/s. Shivasthal Sales Private Limited
6. M/s. Anukaran Supply Private Limited	56. M/s. Jaijnendra Marketing Private Limited	106. M/s. Siddha Style Barter Private Limited
7. M/s. Aravali Hirise Private Limited	57. M/s. Jaijnendra Merchants Private Limited	107. M/s. Sidhant Suppliers Private Limited
8. M/s. Arch Vanijya Private Limited	58. M/s. Jaldham Advisory Private Limited	108. M/s. Silverline Vinimay Private Limited
9. M/s. Arpana Consultancy Private Limited	59. M/s. Jaldham Tie Up Private Limited	109. M/s. Skylink Merchants Private Limited
10. M/s. Arpana Tie Up Private Limited	60. M/s. Jhilmil Sales Private Limited	110. M/s. Spandan Suppliers Private Limited
11. M/s. Artiline Homes Private Limited	61. M/s. Jhilmil Vyapaar Private Limited	111. M/s. Splendor Vyapaar Private Limited
12. M/s. Artiline Projects Private Limited	62. M/s. Jinay Merchants Private Limited	112. M/s. Style Merchants Private Limited
13. M/s. Artiline Realstate Private Limited	63. M/s. Juhi Marketing Private Limited	113. M/s. Sukhjit Vyapaar Private Limited
14. M/s. Average Complex Private Limited	64. M/s. Kalakriti Enclave Private Limited	114. M/s. Sunmart Vyapaar Private Limited
15. M/s. Average Housing Private Limited	65. M/s. Kalakriti Homes Private Limited	115. M/s. Sunshine Barter Private Limited
16. M/s. Average Infracon Private Limited	66. M/s. Kalakriti Housing Private Limited	116. M/s. Superior Complex Private Limited
17. M/s. Average Nirman Private Limited	67. M/s. Kalakriti Properties Private Limited	117. M/s. Superior Hirise Private Limited
18. M/s. Average Projects Private Limited	68. M/s. Kalakriti Realty Private Limited	118. M/s. Surdhuni Advisory Private Limited
19. M/s. Basudev Enclave Private Limited	69. M/s. Kamyabi Consultants Private Limited	119. M/s. Sursarita Advisory Services Private Limited
20. M/s. Basudev Housing Private Limited	70. M/s. Lifelong Enclave Private Limited	120. M/s. Sursarita Consultants Private Limited
21. M/s. Bluebird Tie Up Private Limited	71. M/s. Limeight Hirise Private Limited	121. M/s. Swastik Barter Private Limited
22. M/s. Booster Heights Private Limited	72. M/s. Linkrose Constructions Private Limited	122. M/s. Terapanth Consultancy Services Private Limited
23. M/s. Booster Hirise Private Limited	73. M/s. Linkrose Housing Private Limited	123. M/s. Timeless Realstate Private Limited
24. M/s. Brijbhumi Agents Private Limited	74. M/s. Linkrose Residency Private Limited	124. M/s. Topten Vyapaar Private Limited
25. M/s. Brijbhumi Tie Up Private Limited	75. M/s. Manobal Dealer Private Limited	125. M/s. Vidhata Advisory Services Private Limited
26. M/s. Citywings Vyapaar Private Limited	76. M/s. Manobal Vanijya Private Limited	
27. M/s. Crossway Heights Private Limited	77. M/s. Matrix Sales Private Limited	
28. M/s. Crossway Nirman Private Limited	78. M/s. Maxflow Barter Private Limited	
29. M/s. Dayanidhi Suppliers Private Limited	79. M/s. Moonlife Constructions Private Limited	
30. M/s. Delta Vyapaar Private Limited	80. M/s. Moonlife Nirman Private Limited	
31. M/s. Dhanganga Hirise Private Limited	81. M/s. Moonlife Residency Private Limited	
32. M/s. Dhanganga Infracon Private Limited	82. M/s. Mridul Advisory Private Limited	
33. M/s. Dhanganga Realty Private Limited	83. M/s. Newwave Merchants Private Limited	
34. M/s. Dhanganga Residency Private Limited	84. M/s. Original Realty Private Limited	
35. M/s. Dreamland Hirise Private Limited	85. M/s. Panghat Supply Private Limited	
36. M/s. Elegant Nirman Private Limited	86. M/s. Pawanputra Barter Private Limited	
37. M/s. Gajbadan Vinimay Private Limited	87. M/s. Pawanputra Sales Private Limited	
38. M/s. Gajgami Buildcon Private Limited	88. M/s. Prabhakar Barter Private Limited	
39. M/s. Gajgami Constructions Private Limited	89. M/s. Prajapati Commercial Private Limited	
40. M/s. Gajgami Hirise Private Limited	90. M/s. Prajapati Dealer Private Limited	
41. M/s. Gajgami Realty Private Limited	91. M/s. Preamsagar Advisory Private Limited	
42. M/s. Gajmukhi Enclave Private Limited	92. M/s. Preamsagar Tie Up Private Limited	
43. M/s. Gajmukhi Homes Private Limited	93. M/s. Prime Rose Marketing Private Limited	
44. M/s. Gajmukhi Infracon Private Limited	94. M/s. Radial Housing Private Limited	
45. M/s. Gajmukhi Nirman Private Limited	95. M/s. Radial Residency Private Limited	
46. M/s. Gajmukhi Projects Private Limited	96. M/s. Rimjhim Commodities Private Limited	
47. M/s. Gajmukhi Realstate Private Limited	97. M/s. Rosemary Distributors Private Limited	
48. M/s. Ganesh Tracom Private Limited	98. M/s. Rosemary Tie Up Private Limited	
49. M/s. Ganeshvani Promoters Private Limited	99. M/s. Sadabahar Vyapaar Private Limited	
50. M/s. Greentop Nirman Private Limited	100. M/s. Sagun Advisory Services Private Limited	

Alishan Supply Private Limited
Authorised Signatory

SIGNATURE OF OWNER
 Alishan Supply Private Limited and Others
 111, Park Street, 1st Floor, Kolkata - 700 016



LOCATION PLAN
 SCALE - 1:1000



CERTIFICATE OF STRUCTURAL ENGINEER

CERTIFY THAT THE STRUCTURAL DRAWING AND DESIGN OF BOTH THE FOUNDATION AND SUPERSTRUCTURE OF THE BUILDING / BUILDINGS HAS BEEN MADE CONSIDERING THE SOIL TEST REPORT, AS PER THE RULES AND REGULATIONS MADE UNDER THE ACT AND ALSO CONSIDERING ALL POSSIBLE LOADS, SEISMIC LOAD AND THE MOMENTS GENERATED BY THE PROPOSED STRUCTURE AS PER THE BUREAU OF INDIAN STANDARD AND NATIONAL BUILDING CODE OF INDIA AND CERTIFIED THAT IT IS SAFE AND STABLE IN ALL RESPECT AND THESE PROVISIONS SHALL BE ADHERED TO DURING THE CONSTRUCTION.

Sanjiv J. Parekh
SANJIV J. PAREKH
 M.E. (STRUGT.), M.E. (CONST. ENG.),
 B. C. E., FIE-(F-018202-4)
 STER / NKDA / 10 / 00030

SIGNATURE OF STRUCTURAL ENGG.
 NAME- Sanjiv Parekh
 ENROLLMENT NO.- STER/NKDA/10/00030

CERTIFICATE OF GEO - TECHNICAL ENGINEER

IT IS CERTIFIED THAT THE COMPREHENSIVE GEO-TECHNICAL REPORT ON SOIL INVESTIGATION HAS BEEN PREPARED BY ME FOR DESIGN AND CALCULATION OF THE FOUNDATION BY ANALYZING THE SOIL SAMPLES FOR ESTIMATING THE BEARING CAPACITY OF THE SOIL ON WHICH FOUNDATION OF THE STRUCTURE WILL BE CONSTRUCTED.
 I SHALL ALSO CHECK THE NATURE OF THE SOIL AFTER EXCAVATION AT SITE SO THAT FOUNDATION IS EXTENDED UP TO THE APPROPRIATE DEPTH THAT HAS BEEN PROPOSED IN THE GEO-TECHNICAL REPORT.

Jishnu Pal
JISHNU PAL
 B.Tech (Civil), M.E. (Geo-tech)
 KMC Reg. No. G.T / 1 / 32
 CTER / NKDA / 10 / 0043
 22 / RJSON / G-T-1 / 2016 -17

SIGNATURE OF GEO - TECHNICAL ENGINEER
 NAME- Shyamal Kumar Mitra
 ENROLLMENT NO.-GTER-HIDCO/09/00010

Subir Ranjan Sarkar
Subir Ranjan Sarkar
 Regd. Town Planner
 New Town Kolkata Development Authority
 Enrolment No.: TPER/NKDA/10/00036

SIGNATURE OF TOWN PLANNER OR URBAN DESIGNER
 NAME- Subir Ranjan Sarkar
 ENROLLMENT NO.- TPER/NKDA/10/00036

Sanjib Guha
SANJIB GUHA
 BSC, BCE, FIE-(E-115654-5)
 CHARTERED ENGINEER
 STRV/NKDA/15/00003

SIGNATURE OF STRUCTURAL REVIEWER
 NAME- Sanjiv Guha
 ENROLLMENT NO.-STRV/NKDA/15/00003

CERTIFICATE OF ARCHITECT

I CERTIFY THAT ALL THE ARCHITECTURAL DRAWINGS OF THE PROJECT AT R.S. DAG NOS. 470(P), 471(P), 473, 474, 475, 476, 477, 478, 479, 480, 481, 483, 489, 490, 491, 492, 493, 494, 495, 496, 497, 499, 500, 501(P), 502(P), 503, 504(P), 506(P), 507(P), 509(P), 526(P), 528(P), 529(P), 530(P), 531, 532, 533 & 501/716(P), OF MOUZA - BHATENDA, J.L. NO.28 HAVE BEEN PREPARED BY ME COMPLYING WITH THE NEW TOWN KOLKATA PLANNING AREA (BUILDING) RULES, 2014. I ALSO CERTIFY THAT THE PLANS AND DRAWINGS PREPARED BY ME COMPLYING WITH ALL THE PROVISIONS REGARDING THE FIRE PROTECTION AS PER THE PREVAILING NATIONAL BUILDING CODE OF INDIA. I SHALL BE HELD RESPONSIBLE IF ANY INCORRECT INFORMATION IS FURNISHED BY ME OR ANY VIOLATION OF PROVISIONS OF THESE RULES OR THE PREVAILING NATIONAL BUILDING CODE IS FOUND IN ANY OF THE DRAWINGS AND DOCUMENTS, SIGNED BY ME AND SUBMITTED TO THE SANCTIONING AUTHORITY FOR OBTAINING SANCTION.

Monal Agrawal
MONAL AGRAWAL
 Regd. Architect
 New Town Kolkata Development Authority
 Enrolment No. ACHR/NKDA/10/00020

SIGNATURE OF ARCHITECT
 NAME- MONAL AGRAWAL
 ENROLLMENT NO.-ACHR/NKDA/10/00020

LOCATION PLAN

PROJECT-

PROPOSED ADDITION OF 1NO. (G-X IX) STORIED RESIDENTIAL BUILDING NAMEDLY TOWER-2H & REVISION OF 1NO. (LG-UG-VII) STORIED MLCP BUILDING NAMEDLY TOWER - 4 WITH PREVIOUS SANCTIONED OF 1NO. (G-H) STORIED BUILDING NAMEDLY 3B AND 9NOS. (G-X IX) STORIED RESIDENTIAL BUILDING NAMEDLY TOWER - 1, 2A, 2G, 3A, 2B, 2C, 2D, 2E & 2F APPROVED BY EXECUTIVE OFFICER, RAJARHAT PANCHAYAT SAMITI VIDE MEMO NO. 926/RPS DATED 28/08/2018.

IN WHICH OCCUPANCY CERTIFICATE HAS BEEN OBTAINED FOR 4NOS. TOWER NAMEDLY TOWER - 1, 2A, 2G & 3A VIDE MEMO NO. 2696/RPS DATED 01.08.2019 FROM RAJARHAT PANCHAYAT SAMITI, IN RESIDENTIAL COMPLEX AT MOUZA - BHATENDA, J.L. NO. 28, R.S./L.R. DAG NOS. 470(PART), 471(PART), 473, 474, 475, 476, 477, 478, 479, 480, 481, 483, 489, 490, 491, 492, 493, 494, 495, 496, 497, 499, 500, 501(PART), 502(PART), 503, 504(PART), 506(PART), 507(PART), 509(PART), 526(PART), 528(PART), 529(PART), 530(PART), 531, 532, 533 & 501/716(PART), P.S- RAJARHAT, WITHIN THE JURISDICTION OF RAJATHAT BISHNUPUR NO. 1 GRAM PANCHAYAT, DIST.- NORTH 24 PARGANAS.

ARCHITECTS
AGRAWAL & AGRAWAL
 BARODA KOLKATA

SCALE	DATE	SHEET NO.	DEALT	CHECKED
1 : 1000	05.03.2021	2 OF 11	SANDIP	SHILA

JAY UMBRA
22, PABNA ROAD, NORTH 24 PARGANAS
KOLKATA - 700031
Tel: 98301 10000
Fax: 98301 10001

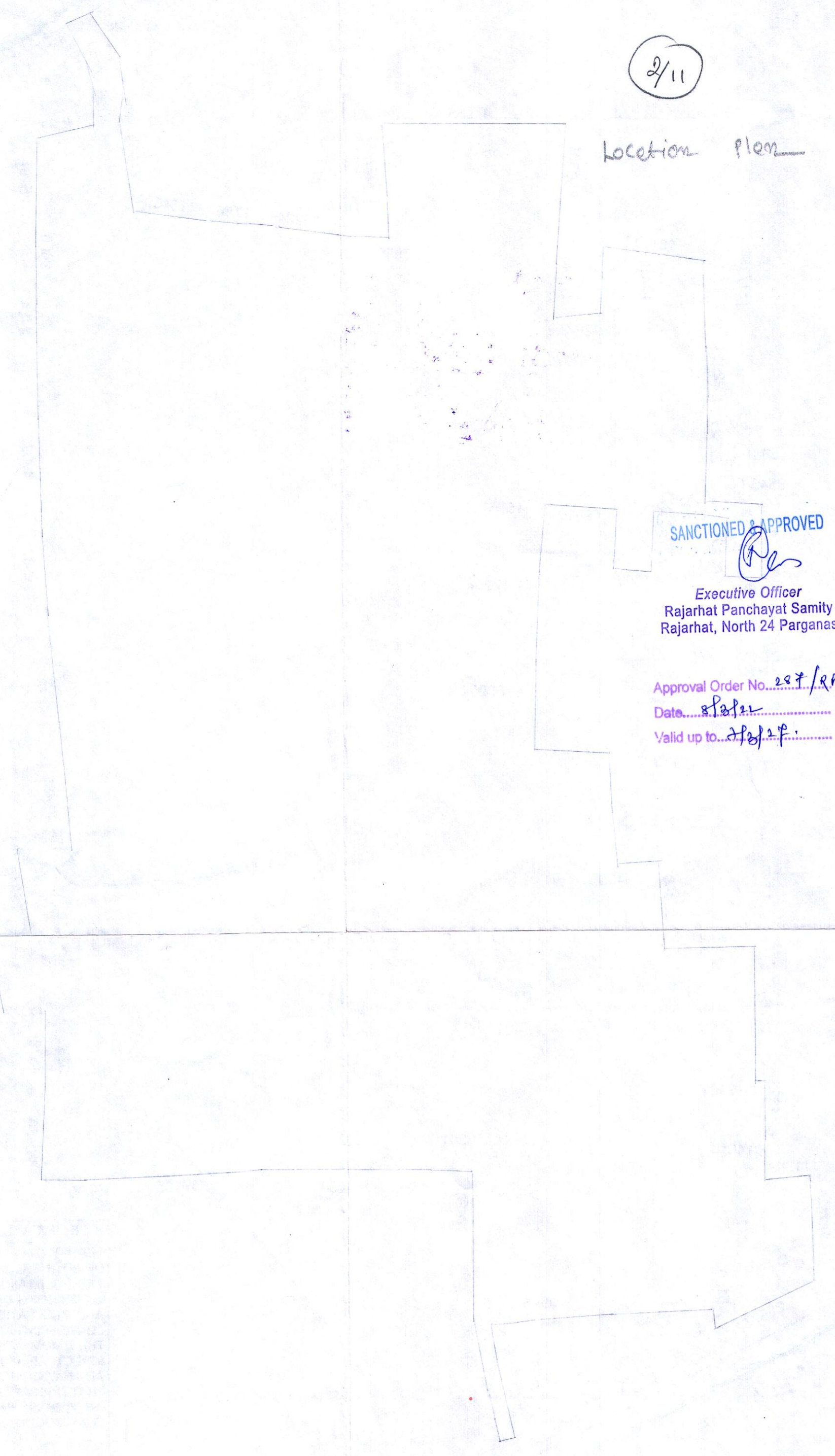
24/01/22

24/01/22

24/01/22

2/11

Location plan



SANCTIONED & APPROVED

Executive Officer
Rajarhat Panchayat Samity
Rajarhat, North 24 Parganas

Approval Order No. 297/RPS
Date: 24/01/22
Valid up to: 24/01/24

ARCHITECT: **Monal Agarwal**
Enrollment No: ACHR/NKDA/10/00020
CIVIL/STRUCTURAL ENGINEER: **Sauvir Banerjee**
Enrollment No: STER/NKDA/10/00030
GEO-TECHNICAL ENGINEER: **Jishnu Pal**
Enrollment No: GTER/NKDA/10/00043
TOWN PLANNER/URBAN DESIGNER: **Subir Rayar Sarker**
Enrollment No: TPER/NKDA/10/00036
STRUCTURAL REVIEWER: **Sajib Guha**
Enrollment No: STRV/NKDA/15/00003

STRUCTURAL DRAWINGS, STRUCTURAL DESIGN CALCULATIONS & SOIL TEST REPORT ARE NOT CHECKED AND KEPT FOR RECORDS ONLY.

Note: This NOC has been issued on the basis of documents submitted by the applicant. It is not to be used as a basis for any legal proceedings. If there was material misrepresentation of fact or fraudulent act or any act of suppression of fact in connection with the above project including the concerned land, plans, drawings, design etc., then, this NOC shall stand cancelled.

NEW TOWN KOLKATA DEVELOPMENT AUTHORITY
No Objection Certificate for
Sanction of Building Plan for Construction Purpose
Memo No. 481/NKDA/BPS-04(2)/2020
Date: 24/01/22

Building Particulars: Proposed addition of one (G+XIX) storied residential building (Tower- 2H) and revision of MLEP Block at Moura Bhatenda, J.L. No. 28, North 24 Pgr.

Note: All the recommendations from Pollution Control Board is to be followed thoroughly at the time of construction.

Sayanti Majumder
Assistant Architect
New Town Kolkata Development Authority

Tapan Kumar Dwari
Chief Architect
New Town Kolkata Development Authority